

Display Systems

Catalogue

T3 Systems Catalogue - 2024/v10

Designed and Produced by **TECNA DISPLAY LTD**

Contents

1. T3 FRAME

Profiles -02

Extrusions -04

Parts - 06

Feet & Wheels -10

Bags & Cases -11

Doors & Accessories -12

TV Mounts & Tapes -13

2. T3 WANDLITE

Components & Accessories -17

3. T3 LITEBOX

Units - 19

4. T3 EASYCUBE

Units & Accessories - 22

5. T3 AFFINITY

Profiles & Extrusions - 24

Parts - 25

Brackets & Clamps - 26

Holdes & Shelves - 27

Lighting & Cases - 28

7. T3 SYSTEMS

Lighting & Accessories - 30

6. T3 SYSTEMS KITS

T3 Frame Sample & Demo Kit - 34

T3 Wandlite Sample Kit - 34

T3 Affinity Sample Kit - 34





Why Us

Our core company principle is simple

TWIST – LOCK – CONNECT

All products designed and manufactured by T3 Systems are tool free solutions. Allowing our users to create hassle free displays using our patented twist and lock assembly method .

Modular display companies, exhibition, display and interior contractors around the world are partnering with T3 systems to build eye-catching and innovative stands, backdrops, conference sets, shop interiors, counters, towers and displays in a fraction of the time it takes to build them using conventional methods.

Our Awards



T3 Frame

THE ORIGINAL MODULAR FRAMEWORK SYSTEM

T3 Frame is the original framework system. Its patented modular, twist lock assembly makes it one of the most versatile and innovative display systems in the world. It allows users to create complex displays in a fraction of the time of other frameworks and without the need for tools or levers. Its wide range of profiles and extrusions allows for unmatched design potential.



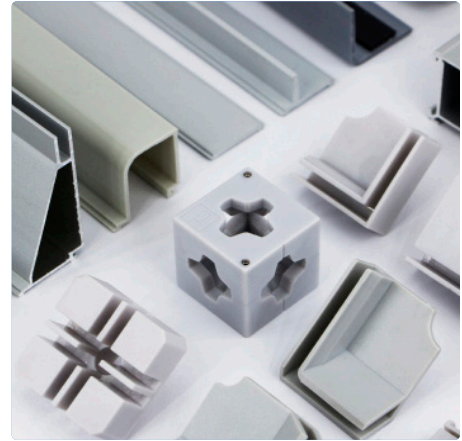
No Tools



Easy to
transport & Store



Modular
Components

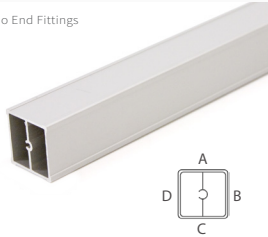


T3 FRAME - Extrusions

AFTO / AFTO3000

Airframe Tube (Custom / Stock length)

No End Fittings

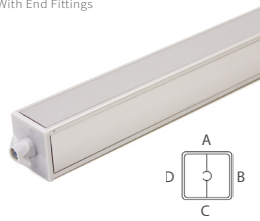


Custom Length from 16mm to 3000mm
 Stock Length 3000mm
 Weight 648g per metre / 1944g Stock
 Pack Quantity 1

AFT

Custom Airframe Tube

With End Fittings



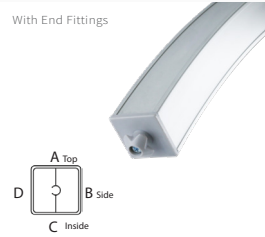
Length: 20mm - 3000mm
 Weight: Custom*

Please contact for specific lengths & weights according to your order.

AFC

Custom Airframe Curve

With End Fittings



Length: 490c/c - 1960 c/c
 Weight: Custom*

Please contact for specific lengths & weights according to your order.

CHTO / CHTO3000

Channel Tube (Custom / Stock length)

No End Fittings

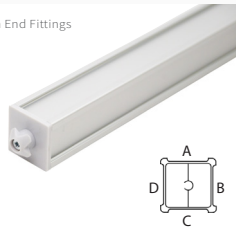


Custom Length from 16mm to 3000mm
 Stock Length 3000mm
 Weight 623g per metre / 1869g Stock
 Pack Quantity 1

CHT

Custom Channel Tube

With End Fittings



Length: 20mm to 3000mm
 Weight: Custom*

Please contact for specific lengths and weights according to your order

CHC

Custom Channel Curve

With End Fittings



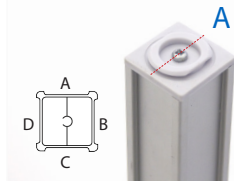
Length: 490c/c - 1960c/c
 Weight: Custom*

Please contact for specific lengths and weights according to your order

CHTL

Custom Channel Twist Lock Tube

With End Fittings



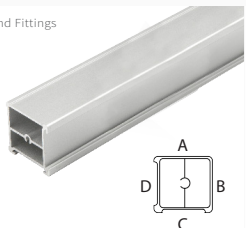
Length: 20mm - 1750mm
 Weight: Custom*

Please contact for specific lengths & weights according to your order

FNT0 / FNT03000

Fusion Tube (Custom / Stock length)

No End Fittings

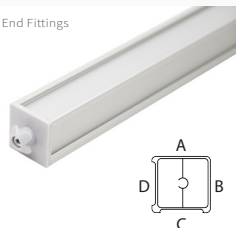


Custom Length from 16mm to 3000mm
 Stock Length 3000mm
 Weight 637g per metre / 1911g Stock
 Pack Quantity 1

FNT

Custom Fusion Tube

With End Fittings

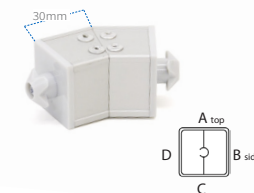


Length: 20mm to 3000mm
 Weight: Custom*

Please contact for specific lengths and weights according to your order

AFANG

Airframe Angle



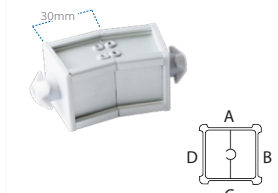
Option for Steel / Velcro to Sides**

Airframe angles range from 2° -75°
 Pack Quantity 1

Please contact for Custom Angle requirements (Made from cut tube which can be extended)*

CHANG

Channel Angle



Option for Steel / Velcro to Sides**

Channel angles range from 2° -75°
 Pack Quantity 1

Please contact for Custom Angle requirements (Made from cut tube which can be extended)*

T3 FRAME - Extrusions

UCTO / UCT 2400

Ultralite Channel tube (Custom / Stock length)



No End Fittings

Custom Length from 20mm to 3000mm
 Stock Length 3000mm
 Weight 0270g per metre / 738g Stock
 Pack Quantity 1

UCT

Ultralite Channel Tube Custom

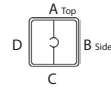


With End Fittings

Length: 20mm - 3000mm
 Weight: 369g per metre
 Please contact for specific lengths & weights according to your order.

UCC0567/90°

Ultralite Channel Curve

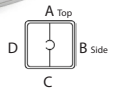
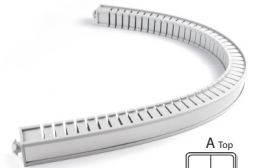


With End Fittings

Length: 567c/c - 600ø (90° only)
 Weight: TBCg
 Profile comes in ONE SIZE ONLY (567mm c/c -600mm Outside diameter cut at 90°)

UFXC

Ultralite Flexi- Tube Custom



With End Fittings

Length: 0400mm - 1000mm
 Weight: Custom*
 Please contact for specific lengths and weights according to your order (Side B only*)

UFTO / UFT 2400

Ultralite Fusion tube (Custom / Stock length)



No End Fittings

Custom Length from 20mm to 3000mm
 Stock Length 3000mm
 Weight 0270g per metre / 812g Stock
 Pack Quantity 1

UFT

Ultralite Fusion Tube Custom

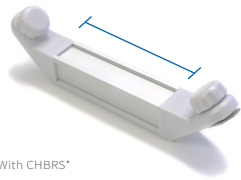


With End Fittings

Length: 20mm - 3000mm
 Weight: 369g per metre
 Please contact for specific lengths & weights according to your order.

CHBRC

Custom Channel Brace



With CHBRS*
 Measured from tube cut size*

Length: 40mm to 2200mm
 Weight: Custom*
 Pack Quantity 1

CHTR2200 / CHTRC

Custom Channel Garment Tube (25mm Diameter)



Cut size*

Length: up to 2400mm
 Weight: 287g per metre
 Please contact for specific lengths & weights according to your order



T3 FRAME - Profiles

CHPSC / CHPS3000

Channel Panel/Shelf-Insert (Custom/Stock length)



Custom Length from 20mm to 3000mm
 Stock Length 3000mm
 Weight 0289.5g Stock
 Pack Quantity 1

CHDIC / CHDI3000

Channel Decor Insert (Custom / Stock length)



Custom Length from 20mm to 3000mm
 Stock Length 3000mm
 Weight 168g Stock
 Pack Quantity 1
 Please contact for Plain, Velcro or Steel option.

CHDS-10

Channel Decor Insert Spacer 10mm



Stock Length 010mm
 Weight 0010g
 Quantity x2 per tube-
 Pack Quantity Please contact for Plain, Velcro or Steel option.

CHGFD / CHGFD2400

Graphic Fabric Double(Custom / Stock length)



Custom Length from 20mm to 3000mm
 Stock Length 2200mm
 Weight 168g Stock
 Pack Quantity 1
 Please contact for Colour options.

CHFCC / CHFC3000

Channel Fabric Comb (stock length)



Custom Length from 20mm to 3000mm
 Stock Weight: 2200mm(332g) /2400mm (362g)
 Pack Quantity 1

CHFSC / CHFSC3000

Channel Fabric Silverlite (Custom/Stock length)



Custom Length from 20mm to 3000mm
 Stock Weight: 2200mm(330g) /2400mm (347g)
 Pack Quantity 1

CHFAC / CHFA3000

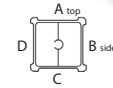
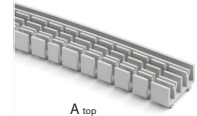
Channel Fabric Silverlite 45° (Custom/Stock length)



Custom Length from 20mm to 3000mm
 Weight 0110g per metre / 0275g Stock
 Pack Quantity 1

CHFFCC

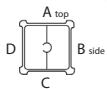
Channel Fabric Comb Custom Flexible



Weight: 95g
 Max Size: 1200mm
 Comb is cut ('fracked') to allow for profile to bend into custom curves requiring tighter degree of angle. Minimum diameter restriction applies*

CHFFSC

Channel Insert Silverlite Custom Flexible

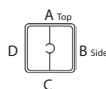


Weight: 95g
 Max Size: 1200mm

Silverlite is cut ('fracked') to allow for profile to bend into custom curves requiring tighter degree of angle. Minimum diameter restriction applies*

CHFFS45°C

Channel Insert 45° Silverlite Custom Flexible



Weight: 95g
 Max Size: 1200mm

Silverlite is cut ('fracked') to allow for profile to bend into custom curves requiring tighter degree of angle. Minimum diameter restriction applies*

CHLB3000

Channel fabric litebox Stock



Length: 3000mm
 Weight: 500g

CHLBC

Custom Fabric Litebox profile



With End Fittings

Length: 20mm - 3000mm
 Weight: Custom*

Please contact for specific lengths & weights according to your order

T3 FRAME - Profiles

CHSDDIC / CHSDDI2400

Sliding double door insert (Custom / Stock length)



Custom Length from 16mm to 3000mm
 Stock Length 3000mm
 Weight 0153g per metre / 0382g Stock
 Pack Quantity 1

CHWPIC / CHWPI2400

Channel Wall Panel Insert (Custom / Stock length)



19mm internal width

Custom Length from 16mm to 3000mm
 Stock Length 3000mm
 Weight 0130g per metre / 0325g Stock
 Pack Quantity 1

CHSBIC / CHSBI2400

Channel Bracket Shelf Insert (Custom/Stock length)



Custom Length from 20mm to 2400mm
 Stock Length 2400mm
 Weight 0237g per metre / 592.5g Stock
 Pack Quantity 1

CHPDIC / CHPDI2400

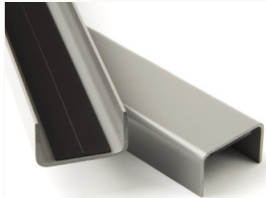
Channel Panel Dual Insert (Custom / Stock length)



Custom Length from 16mm to 2400mm
 Stock Length 2400mm
 Weight 0156g per metre / 0390g Stock
 Pack Quantity 1

EDGUPC / EDGUP2400

'U' Plastic edging (Custom / Stock length)

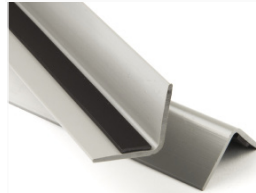


with mag tape*

Custom Length from 10mm to 3000mm
 Stock Length 3000mm
 Weight 0295g per metre / 0885g Stock
 Pack Quantity 1

EDGLPC / EDGLP2400

'L' Plastic edging (Custom / Stock length)

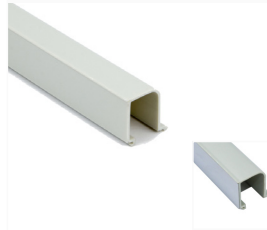


with mag tape*

Custom Length from 10mm to 3000mm
 Stock Length 3000mm
 Weight 0372g per metre / 1116g Stock
 Pack Quantity 1

CHMUIC / CHMUI2400

Channel Multiuse Insert (Custom / Stock length)



Custom Length from 20mm to 3000mm
 Stock Length 3000mm
 Weight 0443g Stock
 Pack Quantity 1
 (Please specify with Steel, Velcro or Plain)

CHF-2000 / CHF

Channel Flexible Hinge Stock / Custom



Custom Length from 10mm to 2000mm
 Stock Length 2000mm
 Weight TBCg per metre / TBCg Stock
 Pack Quantity 1

G-EX

Graphic L angle Custom (available in various sizes)




Size	Weight	Code	
25 x 25	16 x 3000	-	G25EX
25 x 12	16 x 3000	139 pr m	G20EX
12 x 25	16 x 3000	110 pr m	G12EX

Please contact for specific Customizations



T3 FRAME - Parts

CON
Connector



Weight 23g No. quantity per pack 1
Colors Available* Minimum order applies*

CON 2
Connector Double



Weight: 63g
Pack Quantity: 1

RTF M8
Reinforced M8 Threaded fitting for Connector



Weight: 42.8g
Pack Quantity: 1

CONTE-19mm
Tube Extender (19mm)



Weight: 19g
Pack Quantity: 1

CAP / CAPCH
Connector Cap (Plain / Chrome)



*also available in CHROME

Weight: CAP(3g)/CAPCH(3.2g)
Pack Quantity: 1
Please specify color upon order*

HNG
Hinge for Connector



Weight: 14g
Pack Quantity: 1

DJ14 / DJ30
Double joiner - 14mm



DJ14mm - Weight: 13g
DJ30mm - Weight: 16.4g
Pack Quantity: 1


TIN - 05/06/-08/-10
Rivet Tube inserts (M Self Fit only*)



Self Fit only*


M5 3g
M6 4g
M8 6g
M10 9g
Pack Quantity: 1
Please contact for Customization of inserts*

CABT
Cable access tidy




Weight: 19g
Pack Quantity: 1

GH / GHP
Graphic hangers (single / pair)



Weight: 18g
Pack Quantity: 2

SHCLMP
T3 Shell clamp



Weight: 105g
Pack Quantity: 1
Includes x3 Inserts*

TCLMP
Tube Clamp (Steel Sprung)



Weight: 30g
Pack Quantity: 1

T3 FRAME - Parts

AFEFS

Airframe end fitting (Bayonet)



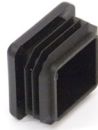
With Screw*

Weight 8.4g (w/s) No. quantity per pack 1

Colors Available* Minimum order applies*
(Rating - ULV_0- Poly C)

AFSEB/G

Stop End CAP (Airframe Only)*



*available in grey or black

Weight: 6g
Pack Quantity: 1
Specify Colour upon order*

FNEFS

Fusion end fitting (Bayonet)



With Screw*

Weight 8.2g (w/s) quantity per pack 1

Colors Available* Minimum order applies*
(Rating - ULV_0- Poly C)

CHFIWP

Wall panel insert



Weight: 4g
Pack Quantity: 1

CHEFS

Channel end fitting (Bayonet)



With Screw*

Weight 8.0 (w/s) No. quantity per pack 1

Colors Available* Minimum order applies*
(Rating - ULV_0- Poly C)

CHEFSTL

Channel Twist lock End Fitting

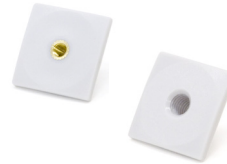


With Screw*

Weight: 6.6g
Pack Quantity: 1

TFM5/TFM8

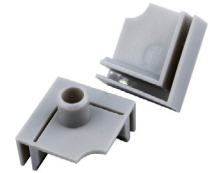
Threaded Fitting For connector (M5/8)



Weight: M5-6g / M8-4g
Pack Quantity: 1
M5 Bayonet fitted with Brass Thread
M8 Bayonet fitted with Thread*

CHFSIC

Fabric silverite infill corner Available in DECO (Black)



Weight: 7.4g
Pack Quantity: 1

CHFSIE

Fabric silverite infill edge Available in DECO (Black)



Weight: 5.6g
Pack Quantity: 1

CHFSII

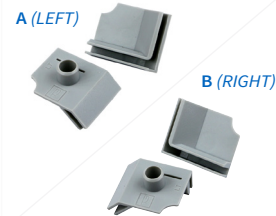
Fabric silverite infill internal Available in DECO (Black)



Weight: 4g
Pack Quantity: 1

CHFAIA / CHFAIB

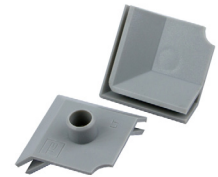
Silverite-45° Insert A (Left) B (Right) Available in DECO (Black)



Weight: 7.8g
Pack Quantity: 1

CHFAIC

Silverite 45° Insert C



Weight: 8g
Pack Quantity: 1

T3 FRAME - Parts

CHFAIE

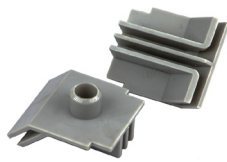
Silverlite 45° Edge Available in **DECO** (Black only)



Weight: 5.6g
Pack Quantity: 1

CHFAIT

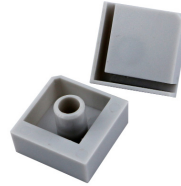
Silverlite 45° Insert T



Weight: 8.6g
Pack Quantity: 1

CHFIC

Channel fabric infill corner



Weight: 7.4g

CHFIT

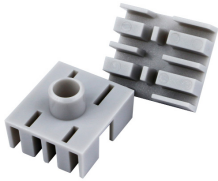
Channel fabric infill T



Weight: 10.2g
Pack Quantity: 1

CHFIW

Channel fabric infill wrap



Weight: 9g
Pack Quantity: 1

CHFIX

Channel fabric infill cross



Weight: 10.2g
Pack Quantity: 1

CHFLBII

Channel fabric infill Internal Corner



Weight: TBCg
Pack Quantity: 1
(Available mid 2019)

CHFLBIC-F

Channel fabric inset corner with notch Available in **DECO** (Black only)



Weight: 18.8g
Pack Quantity: 1

CHFLBIE

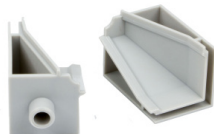
Channel fabric inset corner edge Available in **DECO** (Black only)



Weight: 14.4g
Pack Quantity: 1

CHFLBIC

Channel fabric inset corner Available in **DECO** (Black only)



Weight: 20.2g
Pack Quantity: 1

CHFGD

Channel fabric graphic double



Weight: 10.8g
Pack Quantity: 1

CHSST

Channel shelf support twist in



Weight: 3.8g
Pack Quantity: 1

T3 FRAME - Parts

CHSSA / CHSSAM8

Channel shelf support Adjustable (with opt M8)



Weight: 44.2g
Pack Quantity: 1
M6 Weight: 38g

CHSSF

Channel shelf support fixed



Weight: 21.2g
Pack Quantity: 1

CHBRS

Channel brace show only



Weight: 42g
Pack Quantity: 1

CHSB15-30

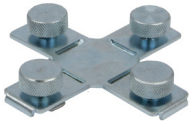
Shelf bracket



Size	Length	Weight	Code
15	150 x 70	050g	B15
20	200 x 70	068g	B20
25	250 x 70	108g	B25
30	300 x 70	137g	B30

SCLMPX

Support clamp flat X



Weight: 324.6g
Pack Quantity: 1

SCLMPI / SLMPIX

Support clamp flat / Extended



Weight: SCLMPI(167g)/SLMPIX (173g)
Pack Quantity: 1

CHRTHK

Rail Suspension Hook (Pair for 25mm rail)



Weight: 35.2g
Pack Quantity: 2

CHRRK

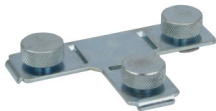
Channel hook insert for rail



Weight: 14g
Pack Quantity: 1

SCLMPT

Support clamp flat T



Weight: 248.4g
Pack Quantity: 1

SCLMPC

Support clamp corner L



Weight: 150g
Pack Quantity: 1

CHREK

25mm Curtain/Garment rail End Cap (Black)



Weight: 9g
Pack Quantity: 2

CHRTEF

Channel Rail End Fitting (For CHRT 25mm)



Weight: 82g
Pack Quantity: 1

T3 FRAME - Feet & Wheels

FA25S/SS

Foot ADJ 25 Static / Stud Only (M8)



*quantity x1 each

Description	Weight	Code
25 mm Static	21g	FA25s
25 mm Stud Only	16g	FA25ss

FA25T/TS

Foot ADJ 25 Tiltglide Static / Stud Only (M8)



*quantity x1 each

Description	Weight	Code
25 mm tiltglide Static	26g	FA25T
25 mm Stud only	22g	FA25TS

FA38S/SS

Foot ADJ 38mm Static / Stud Only (M8)



*quantity x1 each

Description	Weight	Code
38 mm Static	24g	FA38S
38 mm Stud Only	19g	FA38SS

FA40T/TS

Foot ADJ 40 Tiltglide Static / Stud Only (M8)



*quantity x1 each

Description	Weight	Code
40 mm tiltglide Static	33g	FA40T
40 mm tiltglide Stud Only	28g	FA40TS

FA55T/TS

Foot ADJ 55 Tiltglide Static / Stud Only (M8)



*quantity x1 each

Description	Weight	Code
55 mm tiltglide Static	41g	FA55T
55 mm tiltglide Stud Only	35g	FA55TS

FA38XS/XSS

Foot ADJ 38mm Extended Static / Stud Only (M8)



*quantity x1 each

Description	Weight	Code
38 mm EXT Static	28g	FA38XS
38 mm EXT Stud Only	23g	FA38XSS

FWB50/S

50mm Wheel with brake Static / Stud Only (M8)



*quantity x1 each

Description	Weight	Code
Wheel w/ bayonet	100g	FWB50
Wheel M8stud only	96g	FWB50S

FWN50/S

50mm Wheel Unbraked Static / Stud Only (M8)



*quantity x1 each

Description	Weight	Code
Wheel w/ bayonet	101g	FWN50
Wheel M8stud only	97g	FWN50S

FA70SS

Foot ADJ 70mm Static Stud Only (M10)



Weight:	43g
Pack Quantity:	1
Diameter:	70mm

FF01 / FF02

Foot flat single / Double



*quantity x1 each

Description	Weight	Code
Foot flat single	189g	FF01
Foot flat double	612.5g	FF02

T3 FRAME - Bags & Cases

CBS

Carry bag small



Internal size: 340wx220dx350h - mm
 Weight: 570g
 Capacity: 360 connectors
 Pack Quantity: 1

CBM

Carry bag medium



Internal size: 1050wx210dx210h - mm
 Weight: 996.4kg
 Capacity: 36 x 980c/c tubes
 Pack Quantity: 1

CBL

Carry bag large



Internal size: 1300wx210dx170h - mm
 Weight: 1091.6kg
 Capacity: 30 x 1250c/c tubes
 Pack Quantity: 1

CBEX

Carry bag extra large



Internal size: 1550wx170dx170h - mm
 Weight: 1135kg
 Capacity: 25 x 1450c/c tubes
 Pack Quantity: 1

CCL

Large wheeled case



with wheels*

Internal size: 345wx325dx1265l - mm
 Weight: 8.5kg
 Capacity: 90 tubes - 1260mmc/c
 Pack Quantity: 1

CCM

Medium case



with wheels*

Internal size: 290wx250dx960h - mm
 Weight: 4.4kg
 Capacity: 56 tubes - 951 mm c/c
 Pack Quantity: 1

CGD

Circular graphics drum



Internal size: 305 Ø x 1050h - mm
 Weight: 4.6kg
 Capacity: up to 15m graphic panels
 Pack Quantity: 1

CGB

Circular Graphics Bag



Internal size: 305 Ø x1050h
 Weight: 3184.5g
 Capacity: up to 15m graphic panels
 Pack Quantity: 1

ULLB / ULGB

Ultralite Large bag / Graphic Bag



Internal size: 1010wx180dx760l - mm (ULLB)
 254 Ø x 1000l - mm (ULGD)
 Weight: 1650g (ULLB) / 1070g (ULGD)
 Pack Quantity: 1

CFC01

Flight case



with wheels*

Internal size: 1300wx425dx425l - mm
 Extranl size: 1345wx470dx470h - mm
 Weight: 22kg
 Pack Quantity: 1

CBR01 / CBR02

Carry Bag Wheeled (with / without litebox bags)



with wheels*

x1

x3

External size: 1260wx350dx160h (CBR01-Only)
 Weight: 3232g (CBR01) / 3929g (CBR02)
 Pack Quantity: 1
 CBR02 includes litebox bags: CBD01 (x3) , CBP01 (x1)**

CBD01 / CBP01

Litebox Drawstring bag / Padded bag

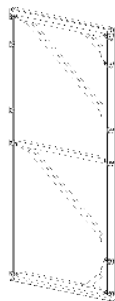


External size: 250wx1115l - mm (CBD01)
 125wx120dx580l - mm (CBP01)
 Weight: 22kg (CBD01) / 22kg (CBP01)
 Pack Quantity: 1

T3 FRAME - Doors & Accessories

AFDSF/FNDSF/CHDSF 0702

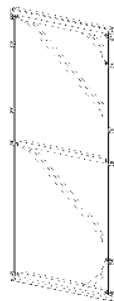
Standard door (Airframe / Fusion / Channel)



Requires DSB* 735MM DENOTES WIDTH C/C*

FNDFF/CHDFF 0702

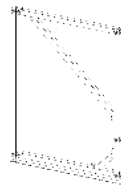
Fabric Standard Door (Fusion/Channel)



AVAILABLE IN PERIMETER ONLY OR DOOR ONLY OPTIONS*

AFDHF/FNDFH/CHDHF0702

Halfdoor (Airframe / Fusion / Channel)



Requires DSB* 735MM DENOTES WIDTH C/C*

AFDC/FNDC/CHDC 0457

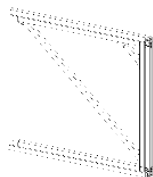
Cupboard door (Fusion/Airframe/Channel)



Requires DSB* 735MM DENOTES WIDTH C/C*

AFDC/FNDC/CHDC 0702

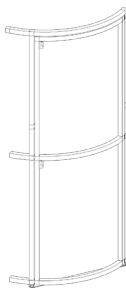
Cupboard Door (Airframe / Fusion / Channel)



Requires DSB* 735MM DENOTES WIDTH C/C*

AFDSC/CHDSC

Custom Curved Door (Airframe / Channel)



735/980 DSB TANGENT RESTRICTION APPLIES*

Size	Height	Kg	Fusion	Airframe	Channel
CUPBOARD DOOR W 457mm	947mm	5KG	FNDC0457	AFDC0457	CHDC0457
CUPBOARD DOOR W 702mm	947mm	5.3KG	FNDC0702	AFDC0702	CHDC0702
HALF DOOR W735mm 702mm	947mm	5.5KG	FNDHF0702	AFDHF0702	CHDHF0702
STANDARD DOOR W 702mm	1993mm	11KG	FNDSF702	AFDSF702	CHDSF702
FABRIC DOOR W 702mm	1993mm	12KG	FNDFF702	-	CHDFF702
CURVED DR CSTM (457-12000Ø)	-	-	-	AFDSC	CFDSC

DOORS AVAILABLE WITH CUSTOM EXTRUSIONS (AIRFRAME TUBE ON ALL LOCKED DOORS)

DSL

Door lock only (Self Fitted)



Weight: 87g
Pack Quantity: 1

DSK / DSKXL

Door key only (Standard / Extralong)



Weight: 12g
Pack Quantity: 1

DSHM

Door hinge metal (Self Fitted)



Weight: 140g
Pack Quantity: 1

*quantity x1 each

DSB 702 / 947

Doorbar complete with feet



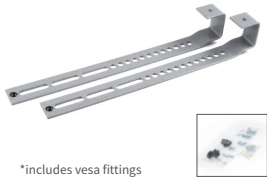
*Includes x2 - 25mm Static feet (FA25-S)

Description	Weight	Code
735mm c/c	1052g	DSB0735
980mm c/c	1402g	DSB0980

T3 FRAME - TV Mounts & Tapes

MSH

Monitor support hooks



*includes vesa fittings

Weight: 802g
Pack quantity: 1
Includes Bolt pack (MSHB*)
Bolt pack can be bought seperately*

MSB

Monitor support bracket

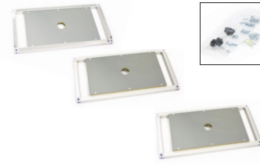


*includes vesa fittings

Weight: 1378g
Pack quantity: 1
Includes Bolt pack (MSBB*)
Bolt pack can be bought seperately*

AFSM / CHSM / FNSM

Screen Mount



Includes Bolt pack (MSMB*)
Bolt pack can be bought seperately*
Channel option protrude from mount by 14mm

Size	Channel	Airframe	Fusion
Custom	CHSMC	AFSMC	FNSMC
612.5mm c/c	CHSM0612.5	AGSM0612.5	FNSM0612.5
735mm c/c	CHSM0735	AFSM0735	FNSM0735
867mm c/c	CHSM0867.5	AFSM0867.5	FNSM0867.5
980mm c/c	CHSM0980	AFSM0980	FNSM0980
1102.5mm c/c	CHSM1102.5	AFSM1102.5	FNSM1102.5
1225mm c/c	CHSM1225	AFSM1225	FNSM1225

TTM EU / UK

turntable medium



*available without cradle

Weight: 4122g
Pack Quantity: 1
(220v EU / UK)

LPSB- S/D

LED Panel Support Bracket (Single/Double)



*includes Key fittings and attachments

Pack Weight: Single 504g / Double 650g
*Pack contains x1 Key Fitting x1 Large & Small Attachment

Pack quantity: 1 of each

TSR

Steel tape



Size	Weight	Code
22mm x 147m	9.7kg	TSR22
25mm x 147m	11.2kg	TSR25

TSHB

Steel & high bond double sided tape



Size	Weight	Code
22mm x 147m	76g	TSHB22
25mm x 147m	86g	TSHB25

TV12 / 25MM

Velcro tape



*roll size 25m, available in both Black or White

Type	Colour	Weight	Code
Hook	12mm	315g	TV12HK
Loop	12mm	184g	TV12LP
Hook	25mm	504g	TV25HK
Loop	25mm	363g	TV25LP

TV25TB

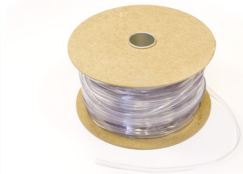
Velcro tab set White (x8)



Weight: 22.5g
Pack Quantity: 8
Includes - x4 (Loop) / x4 (Hook)

CHFGE

Channel fabric edging

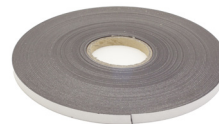


*175 metres per roll

Weight: 7.4kg
Pack Quantity: 1

TMR

Magnetic tape



Size	Weight	Code
12.5mm x 30m	2300g	TMR12.5
25 x 30m	4240g	TMR25

THB

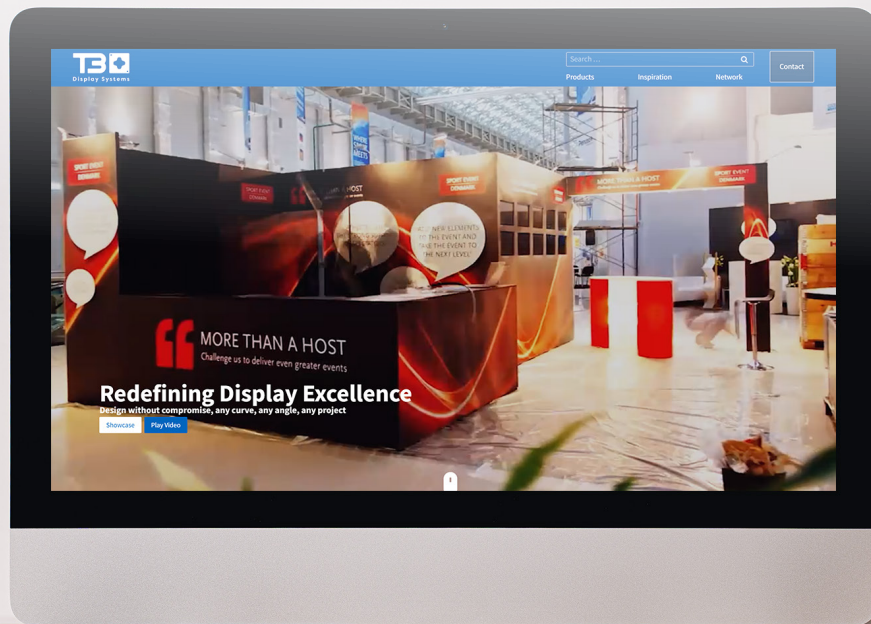
High bond double sided tape



Size	Weight	Code
12mm x 50m	179g	THB12
22mm x 50m	330g	THB22
25mm x 50m	354g	THB25

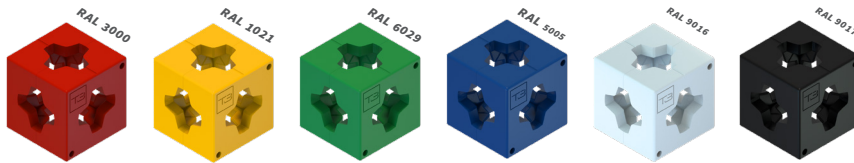


Redefining Display Excellence



Your T3 World In COLOUR!

The world's only completely coloured modular display framework.
 All the benefits of the ultimate modular framework system
 but in bright and inviting colours.
 (Minimum order quantities apply to non-standard colours**)



OUR STANDARDS

Currently we stock 6 RAL K5 colours for all T3 Deco items. Please see below colours for exact specifications:

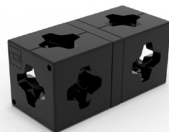
For more information about other colours and products please visit our website www.t3systems.com (MOQ applies to any

DCCON - BK/BU/GN/RD/YL/WH
 DECO Connector



Weight 23g No. quantity per pack 1

DCCON 2 - BK/BU/GN/RD/YL/WH
 DECO Connector Double



Weight: 63g
 Pack Quantity: 1

DCCAP - BK/BU/GN/RD/YL/WH
 DECO Connector Cap



*also available in CHROME

Weight: CAP(3g)/CAPCH(3.2g)
 Pack Quantity: 1

DCEFS- BK/BU/GN/RD/YL/WH
 Channel end fitting (Bayonet)



With Screw*

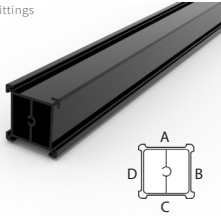
Weight 8.0 (w/s) No. quantity per pack 1
 (Rating - ULV_0- Poly C)

T3 FRAME - Colour Parts & Accessories

DCCHTO - BK/BU/GN/RD/YL/WH

DECO Channel Tube (Custom / Stock length)

No End Fittings

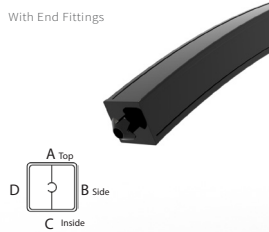


Custom Length from 16mm to 3000mm
 Stock Length 3000mm
 Weight 623g per metre / 1869g Stock
 Pack Quantity 1

DCCC BK/BU/GN/RD/YL/WH

DECO Custom Airframe Curve

With End Fittings

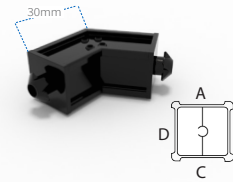


Length: 490c/c - 1960 c/c
 Weight: Custom*

Please contact for specific lengths & weights according to your order.

DCCANG - BK/BU/GN/RD/YL/WH

Channel Angle



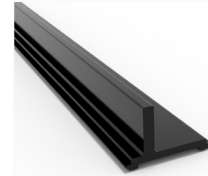
Option for Steel / Velcro to Sides**

Channel angles range from 2° -75°
 Pack Quantity 1

Please contact for Custom Angle requirements (Made from cut tube which can be extended)*

DCPSC - BK/BU/GN/RD/YL/WH

Channel Panel/Shelf-Insert (Custom/Stock length)



Custom Length from 20mm to 3000mm
 Stock Length 3000mm
 Weight 0289.5g Stock
 Pack Quantity 1

DCLMP - BK/BU/GN/RD/YL/WH

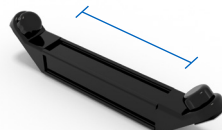
DECO T3 Panel Clamp



Weight -g No. quantity per pack 1

DCBRC - BK/BU/GN/RD/YL/WH

DECO Custom Channel Brace

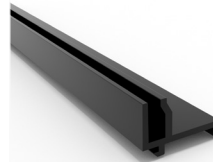


With CHBRS*
 Measured from tube cut size*

Length: 40mm to 3000mm
 Weight: Custom*
 Pack Quantity 1

DCFSC - BK/BU/GN/RD/YL/WH

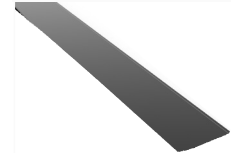
DECO Channel Fabric Silverlite (Stock length)



Custom Length from 20mm to 3000mm
 Stock Weight: 2200mm(330g) /2400mm (347g)
 Pack Quantity 1

CHDIC - BK/BU/GN/RD/YL/WH

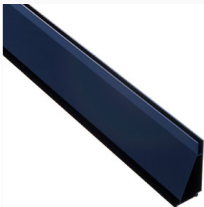
DECO Channel Decor Insert (Stock length)



Custom Length from 20mm to 3000mm
 Stock Length 3000mm
 Weight 168g Stock
 Pack Quantity 1
 Please contact for Plain, Velcro or Steel option.

DCFAC - BK/BU/GN/RD/YL/WH

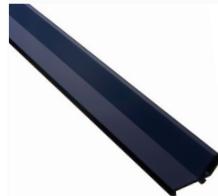
DECO Channel Fabric 45° Angle



Custom Length from 20mm to 3000mm
 Stock Weight: 2200mm(330g) /2400mm (347g)
 Pack Quantity 1

DCHBLC - BK/BU/GN/RD/YL/WH

DECO Fabric Litebox profile



Custom Length from 20mm to 3000mm
 Stock Weight: 2200mm(330g) /2400mm (347g)
 Pack Quantity 1

Infills also available in Deco (black only) see page 8 for details*

For more information Visit:

WWW.T3SYSTEMS.COM

TB Wandlite

THE REVOLUTIONARY 360° L.E.D TUBE LIGHT

With its patented lightweight, unbreakable and portable design it is one of the most versatile lights available in the display and exhibition industry. It emits a bright, white 360° light and is easily installed into any type of structure, all this adds up to it being the ideal lighting solution.



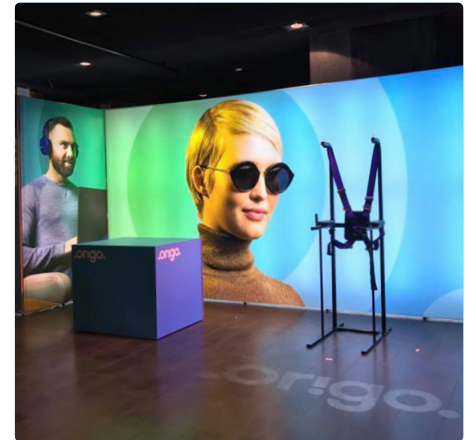
Waterproof &
Dustproof



Low Voltage



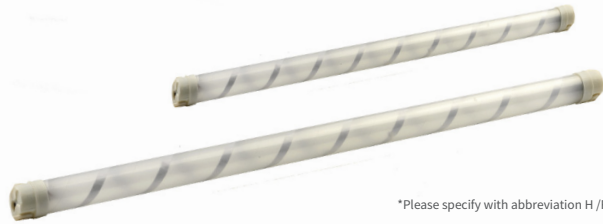
Eco-Friendly



T3 Wandlite - Parts

WA-H / R

Wandlite LED tube - High Bright / RGB



*Please specify with abbreviation H /RGB

Sizes:	WA001H (0366.5mm)	WA002H (0490mm)	WA003H (0612mm)
	WA004H (0735mm)	WA005H (0857mm)	WA006H (0980mm)
	WA007H (1102mm)	WA008H (1225mm)	WA009H (1347mm)
	WA010H (1469mm)	WA011H (1592mm)	WA012H (1715mm)
	WA013H (1836mm)	WA014H (1960mm)	

WLCSH

Suspension hanger



Weight: 4.2g
Pack quantity: 1

WLCFC

Fixing clip



Weight: 12g
Pack quantity : 1

WLFS

Splitter flex



Weight: 31g
Pack quantity: 1

WLFL

Link Flex



Weight: 11g
Pack quantity: 1

WLFL E

Link Extension Male to Female



Weight: 36.6g
Pack quantity: 1
1m in length**

WLT 5A / 13A

Transformer (avail in UK/US/EU)



Weight:	Code:	Amp:
432g	WLT 5	5
1049g	WLT 13	13

WLHK - C40 / D10

*C Hook 040mm / Double end 100mm



Weight 040mm	1.8g
Weight 100mm	3.8g
Pack Quantity:	1

WLHKS100

WLHK100/ CHSST / WLSCH (x1 each)*



Weight 040mm	90g
Weight 100mm	130g
Pack Quantity:	1

WLSZ

Z stand



Weight: 916g
Pack quantity: 1

WLRGBC

RGB ONE



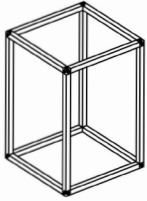
Weight: 22g
Pack quantity: 1

T3 Frame - Polycarbonate Units

ECP2012

Easycube Square Plinth (Incl Top & Base)

*Includes Feet (FA38s)



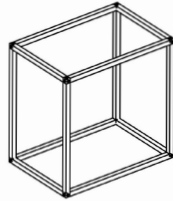
Height & Width: 883.5mm x 600mm

Alt Ver: ECP2010 - Frame only (No Feet/Base/Top/Shelf)
ECP2011 - Base Only (No Top)
ECP2013 - Includes Shelf with CHSSA
ECP2014 - Split height for Shelf (Includes Shelf)

ECP2022

Easycube Oblong Plinth (Incl Top & Base)

*Includes Feet (FA38s)



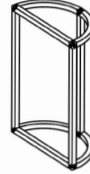
Height & Width: 883.5mm x 883.5mm x 600mm

Alt Ver: ECP2020 - Frame only (No Feet/Base/Top/Shelf)
ECP2021 - Base Only (No Top)
ECP2023 - Includes Shelf with CHSSA
ECP2024 - Split height for Shelf (Includes Shelf)

ECP3012

Easycube Semi-Circle Plinth (Incl Top & Base)

*Includes Feet (FA38s)



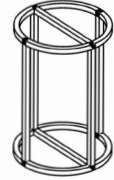
Height & Width: 300mm x 883.5mm x 600mm

Alt Ver: ECP3010 - Frame only (No Feet/Base/Top/Shelf)
ECP3011 - Base Only (No Top)
ECP3013 - Includes Shelf with CHSSA
ECP3014 - Split height for Shelf (Includes Shelf)

ECP3022

Easycube Circular Plinth (Incl Top & Base)

*Includes Feet (FA38s)



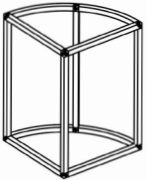
Height & Width: 883.5mm x 600-OD

Alt Ver: ECP3020 - Frame only (No Feet/Base/Top/Shelf)
ECP3021 - Base Only (No Top)
ECP3023 - Includes Shelf with CHSSA
ECP3024 - Split height for Shelf (Includes Shelf)

ECP4012

Easycube Corner Plinth (Incl Top & Base)

*Includes Feet (FA38s)



Height & Width: 600mm x 600mm (1167-OD)

Alt Ver: ECP4010 - Frame only (No Feet/Base/Top/Shelf)
ECP4011 - Base Only (No Top)
ECP4013 - Includes Shelf with CHSSA
ECP4014 - Split height for Shelf (Includes Shelf)

ECC1010

Promotional Cube Small (No Shelf)

*No Feet



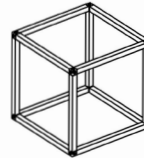
Dimensions: 316.5mm Cube

*No Accessories included

ECC1020

Promotional Cube Medium (No Shelf)

*No Feet



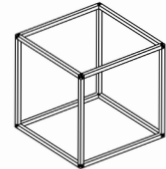
Dimensions: 600mm Cube

*No Accessories included

ECC1030

Promotional Cube Large (No Shelf)

*No Feet



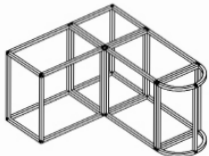
Dimensions: 883.5mm Cube

*No Accessories included

ECB01

Easycube Bundle

*Includes Feet (FA38s)



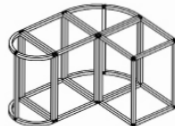
Depth & Width: 1483.5mm x 1783.5mm

**Includes Tops / Shelves/ Tube Clamps

ECB02

Easycube Bundle

*Includes Feet (FA38s)



Depth & Width: 1200mm x 1500mm

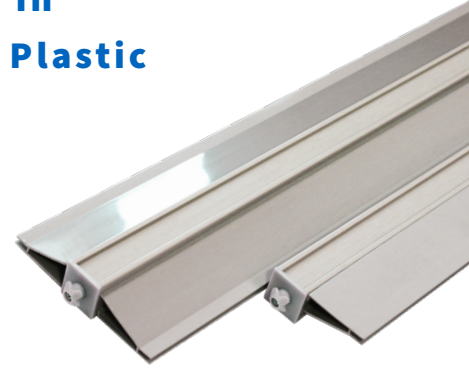
**Includes Tops / Shelves/ Tube Clamps

ALL UNITS ARE FITTED WITH VELCRO AS STANDARD, FOR MORE OPTIONS AND CUSTOM VARIATIONS PLEASE CONSULT OUR SALES TEAM:

SALES@TECNADISPLAY.COM

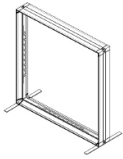
T3 Frame - Litebox Units

Now available in
High strength Plastic



LB1010

Litebox 1m x 1m (T3 Frame only)



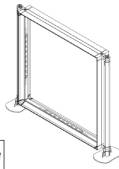
CRB included*

Size Excluding Feet (33mm):1000mm x 1000mm

Includes: Roller Carry Bag
LED Lights and Accessories
Channel Inserts
End Sides Plates and Fittings

LB1010-A

Litebox 1m x 1m (T3 Frame & T3 Affinity)



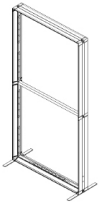
CRB included*

Size Excluding Feet (64mm):1000mm x 1000mm

Includes: T3 Affinity Uprights Accessories
Roller Carry Bag
LED Lights and Accessories
Channel Inserts

LB1020-S

Litebox 2m x 1m (SPLIT T3 Frame only)



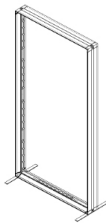
CRB included*

Size Excluding Feet (33mm):2000mm x 1000mm

Includes: Roller Carry Bag
LED Lights and Accessories
Channel Inserts
End Sides Plates and Fittings

LB1020

Litebox 2m x 1m (T3 Frame)

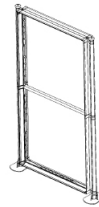


Size Excluding Feet (33mm):2000mm x 1000mm

Includes: T3 Affinity Uprights Accessories
LED Lights and Accessories
Channel Inserts

LB1020-SA

Litebox 1m x 1m (SPLIT T3 Frame & T3 Affinity)



CRB included*

Size Excluding Feet (64mm):2000mm x 1000mm
Weight: 23.6kg

Includes: T3 Affinity Uprights Accessories
Roller Carry Bag
LED Lights and Accessories
Channel Inserts

LB1020-A

Litebox 2m x 1m (T3 Frame & T3 Affinity)

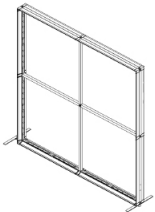


Size Excluding Feet (64mm):2000mm x 2000mm

Includes: T3 Affinity Uprights Accessories
LED Lights and Accessories
Channel Insert

LB2020-S

Litebox 2m x 2m (SPLIT T3 Frame only)

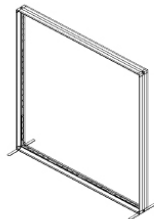


Size Excluding Feet (33mm):2000mm x 2000mm

Includes: LED Lights and Accessories
Channel Inserts
End Sides Plates and Fittings

LB2020

Litebox 2m x 2m (T3 Frame)

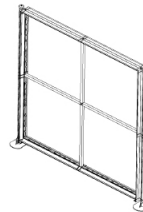


Size Excluding Feet (33mm):2000mm x 2000mm

Includes: T3 Affinity Uprights Accessories
LED Lights and Accessories
Channel Inserts

LB2020-SA

Litebox 2m x 2m (SPLIT T3 Frame & T3 Affinity)

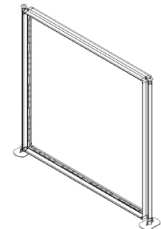


Size Excluding Feet (64mm):2000mm x 2000mm

Includes: LED Lights and Accessories
Channel Inserts
End Sides Plates and Fittings

LB2020-A

Litebox 2m x 2m (T3 Frame & T3 Affinity)



Size Excluding Feet (64mm):2000mm x 2000mm

Includes: T3 Affinity Uprights Accessories
LED Lights and Accessories
Channel Inserts

T3 Affinity

THE COMPLETE RETAIL & DISPLAY SYSTEM

The T3 Affinity system is a complete retail and display system. The patented design allows for displays and stands to be built quickly and without the use of tools. With its broad range of retro fit accessories, it is ideally suited for all manner of product and graphic displays. .



Customizable



No Tools



Fast Build
Times



T3 Affinity - Profiles & Extrusions

AYEB

Affinity Beam Standard (with End fittings)



Size	Weight	Cut length	Code
0300mm c/c	315g	0237mm	AYEB0300
0400mm c/c	398g	0337mm	AYEB0400
0600mm c/c	565g	0537mm	AYEB0600
0800mm c/c	732g	0737mm	AYEB0800
1000mm c/c	898g	0937mm	AYEB1000
1200mm c/c	1065g	1137mm	AYEB1200
CUSTOM	-	50-2400mm	AYEBC
CUSTOM (twist)	-	50-2400mm	AYEBTL

AYEBC-F/M/MF

Affinity Beam Central Joiner (Male / Female)



AYEBC-~~Male~~ incl x1 (AYA3001) + Custom Tube
 AYEBC-~~Female~~ incl x1 (AYA3001) + Custom Tube
 AYEBC-~~MF~~ (No AYA3001) + Custom Tube
 Pack Quantity: 1
 Available late 2018**

AYEBP24

Stock length beam - (2400mm only)



Weight: 2390g
 Cut length: 2400mm

AYEP

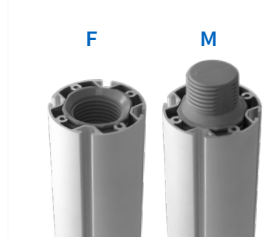
Affinity Post Standard (with End fittings)



Size	Weight	Cut length	Code
0885mm c/c	873.5g	0885mm	AYEP0885
0985mm c/c	1000g	0985mm	AYEP0985
1085mm c/c	1057g	1085mm	AYEP1085
1135mm c/c	1102g	1135mm	AYEP1135
CUSTOM	-	50-2400mm	AYEPC

AYEPC-F/M/MF

Affinity Post Central Joiner (Male / Female)



AYEPC-~~Male~~ incl x1 (AYA3001) + Custom Tube
 AYEPC-~~Female~~ incl x1 (AYA3001) + Custom Tube
 AYEPC-~~MF~~ (No AYA3001) + Custom Tube
 Pack Quantity: 1
 Available late 2018**

AYEPP24

Stock length Posts - (2400mm only)



Weight: 2390g
 Cut length: 2400mm

AYER 19T (C) / 25T (C)

19mm and 25mm Extrusion (Custom / Stock)



Weight 2400mm: 381.5g(19mm)/580g(25mm)
 Pack Quantity: 1

For Custom sizes please state cut size**
 Stock Size 2400mm (19 & 25 mm)

AYPSD / AYPSDC

Sliding Door profile (Stock 2400mm / Custom)



Stock Weight: 3545g
 Pack Quantity: 1

AYPCT / AYPCTC

Cable Trunking profile 2400mm



Stock Weight: 2091g
 Pack Quantity: 1

AYRGE

Round Graphic Edging (200m roll)



Size: 2.7mm x 10mm
 Weight: 7900g
 Code: AYRGE

T3 Affinity - Parts

AYA - 1001

Connector



Weight: 51g
Pack Quantity: 1

AYA - 1002

Post Connector cap



Weight: 36g
Pack Quantity: 1

AYA - 1003

Post Connector Cap with M8 thread



Weight: 35g
Pack Quantity: 1

AYA - 1004

T3 Adaptor



*joins T3 Frame to T3 Affinity

Weight: 12.2g
Pack Quantity: 1

AYA - 1006

Hinge



Weight: 17g
Pack Quantity: 1

AYA - 1007

Top/ Board retainer Stud



Weight: 32g
Pack Quantity: 1

AYA - 1008

Foot 80mm (M8- 50mm Stud only)



Weight: 108g
Pack Quantity: 1

AYA - 1009

Foot 50mm (M8- 78mm Stud only)



Weight: 40g
Pack Quantity: 1

AYA - 2000

Cap & Foot 80m (with M8 thread 50mm)



Weight: 143g
Pack Quantity: 1

AYA - 2001

Cap & Foot 50m (with M8 thread 78mm)



Weight: 75g
Pack Quantity: 1

AYA - 2007

Cap & Top Board Retainer



Weight: 68g
Pack Quantity: 1

AYA - 2010

M8 cap c/w wheel (unbraked)



Weight: 131g
Pack Quantity: 1

T3 Affinity - Parts

AYA - 2011

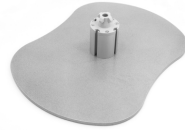
M8 Cap c/w wheel (braked)



Weight: 132g
Pack Quantity: 1

AYA - 2104

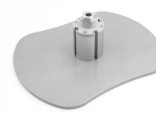
Base Large



Weight: 3529g
Pack Quantity: 1

AYA - 2105

Base Small



Weight: 2091g
Pack Quantity: 1

AYA - 2124

Foot Rectangle Small



Weight: TBC g
Pack Quantity: 1

AYA - 3001

End fitting for Beam



Weight: 28g
Pack Quantity: 1

AYA - 3002

End fitting for Post



Weight: 31g
Pack Quantity: 1

AYA - 3003

Twist Lock End fitting for Beam



Weight: 34g
Pack Quantity: 1

AYA - 3004

Moulded End fitting for 19mm Graphic Pole



Weight: 26g
Pack Quantity: 1

AYA - 3005

Side End Fitting for 19mm Graphic Pole



Weight: 21g
Pack Quantity: 1

AYA - 3006

End Fitting for 25mm Round Extrusion



Weight: 112g
Pack Quantity: 1

AYA - 3008

T - Bolt



Weight: 21g
Pack Quantity: 1

AYA - 3010

Post Stop End Cap



Weight: 8g
Pack Quantity: 1

T3 Affinity - Parts

AYA - 3011

Beam Stop End Cap



Weight: 7g
Pack Quantity: 1

AYA - 3012

19mm Graphic Pole End cap (Black)



Weight: 4g
Pack Quantity: 2

AYA - 3013

25mm Round End cap (Black)



Weight: 8g
Pack Quantity: 2

AYA3101

Affinity Beam Central Joiner



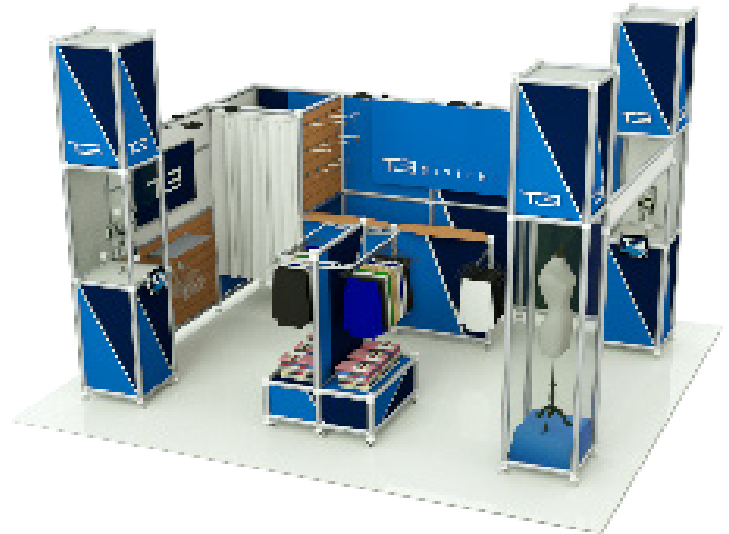
Weight: 30.6g (70.2g)
Pack Quantity: 2
Available late 2018**
(x2 units per side)

AYA3102

Affinity Post Central Joiner



Weight: 23g (46g)
Pack Quantity: 2
Available late 2018**



Display Systems

T3 Affinity - Brackets & Clamps

AYA - 4001 S / P

Single Shelf Bracket (Single / Pair)

(c/w T-bolt)*



Weight: 394g (Pair) / 197g (Single)
Pack Quantity: 1 / 2

Single bracket available in LEFT / RIGHT (L/R)*

AYA - 4002

Single Centre Shelf Bracket (Post)

(c/w T-bolt)*



Weight: 187g
Pack Quantity: 1

AYA - 4003 S / P

Double Shelf Bracket (Single / Pair)

(c/w T-bolt)*



Weight: 742g (Pair) / 372g (Single)
Pack Quantity: 1 / 2

Single bracket available in LEFT / RIGHT (L/R)*

AYA - 4004

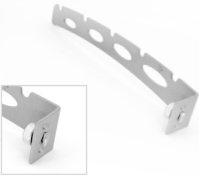
5 Slot bracket for Beam (c/w T-bolt)



Weight: 179g
Pack Quantity: 1

AYA - 4005

5 Slot bracket for Post (c/w T-bolt)



Weight: 181g
Pack Quantity: 1

AYA - 4006

90° bracket for Beam (c/w T-bolt)



Weight: 43g
Pack Quantity: 1

AYA - 4007

90° bracket for post (c/w T-bolt)



Weight: 43g
Pack Quantity: 1

AYA - 4008 S/P

Saddle bracket For Beam (Single / Pair)



Weight: 90g
Pack Quantity: 1

No bolt / Screw included**

AYA - 4009

90° bracket for Beam (c/w T-bolt)



Weight: 38g
Pack Quantity: 1

AYA - 4015

T3 Clamp

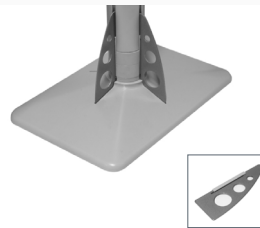


Weight: 070g
Pack Quantity: 1

c/w Affinity Bolts*

AYA - 4020

Post Connector Rigidizer

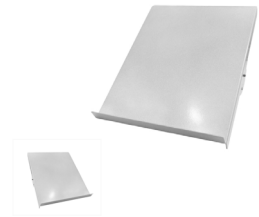


Weight: 60g
Pack Quantity: 1

T3 Affinity - Holders & Shelves

AYA - 5001 L/R

Literature holder (c/w t bolt)



Weight: 194.4g
Pack Quantity: 1

Left or Right Version available*

AYA - 5002

A4 brochure holder



Weight: 421g
(c/w AYA 4008 T-bolt)
Pack Quantity: 1

AYA - 5003

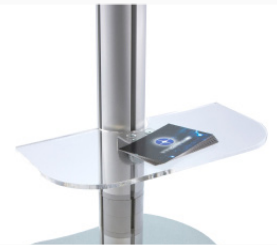
Acrylic shelf semi-circle Small



Weight: 156g
(c/w AYA 4008 T-bolt)
Pack Quantity: 1

AYA - 5004

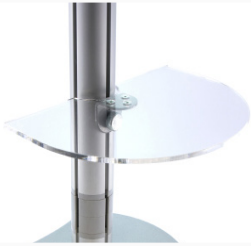
Acrylic shelf small - Oblong



Weight: 198g
(c/w AYA 4008 T-bolt)
Pack Quantity: 1

AYA - 5005

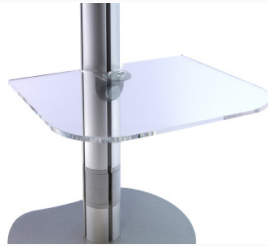
Acrylic shelf semi-circle Large



Weight: 254g
(c/w AYA 4008 T-bolt)
Pack Quantity: 1

AYA - 5006

Acrylic shelf large - Oblong



Weight: 327g
(c/w AYA 4008 T-bolt)
Pack Quantity: 1

AYA - 5007

Metal shelf (Fits AYE0863 c/c tube)



Weight: 2687g
Pack Quantity: 1

AYA - 5010

Wire System



Weight: 200g
(c/w AYA 4008 T-bolt)
Pack Quantity: 1

AYA - 5012

Monitor Holder

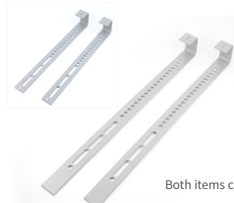


c/w bottl pack*

Weight: 619g
Pack Quantity: 1

AYA - 5014 /5015

Affinity Monitor Support Hook Small / Large



Both items c/w
bolt packs**

Weight: 548g (SMALL) / 733g (LARGE)
Pack Quantity: 1

AYA - 5020

Tablet Holder Large



Weight: 664g
Pack Quantity: 1

AYA - 5021

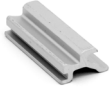
Tablet Holder Small



Weight: 626g
Pack Quantity: 1

AYA - 6001

Mounting Clip for Arm Lights



Weight: 6g
Pack Quantity: 1

Lighting options can be found in our Lighting & accessories section (page 31-32)*

AYA - 7011

Case (with wheels)



Weight: 8kg
Pack Quantity: 1

AYA - 6002

Spotlight adaptor



Weight: 80g
Pack quantity: 1

TWIST - LOCK CONNECT



T3 Affinity - Lighting & Accessories

WA-H / R - C

Wandlite LED tube Light - HighBright/RGB Custom



Custom Sizes available, minimum order applies*

WLHKD040 / 100

'C' Hook 040mm / Double end 100mm



Weight 040mm 02g
Weight 100mm 04g
Pack Quantity: 1

WLSLB

Stick light bracket



*Available in custom sizes

Size	Weight	Code
245c/c	59g	SLB0245
367.5c/c	90g	SLB0367.5
490c/c	100g	SLB0490
735c/c	131g	SLB0735
CUSTOM	as per order	SLBCSTM

WLAC

Adhesive Clip for Wandlite



Weight: 35g
Pack quantity: 1

WTL2SUK

Splitter Lead for Transformer (13 amp UK only)*



*UK only

Weight: 373g
Pack quantity: 1

WTLTEX

Extension lead for Transformer (UK only)*



3000mm long

Weight: 250g
Pack quantity: 1

WLTA

Adaptor 12mm to 14mm



Weight: 6g
Pack quantity: 1

LSC-2400 / LSCC

L.E.D Cover Stock / Custom



Weight: TBC
Pack quantity: 1

SPLBLK - EU / UK / US

LED spotlight - black - 100w



Double sided Connection
*includes Clamp & Plug
(Extension sold separately)

Weight: EU (551g) / UK (558g) / US (547g)

*Weight includes all x3 Components - Spotlight, Clamp & Plug

Pack quantity: 1

SPLCHR - EU / UK / US

LED spotlight - chrome - 100w



Double sided Connection
*includes Clamp & Plug
(Extension sold separately)

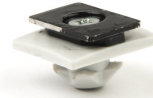
Weight: EU (551g) / UK (558g) / US (547g)

*Weight includes all x3 Components - Spotlight, Clamp & Plug

Pack quantity: 1

SPCAD

Spotlight adaptor



Weight: 23g

Pack quantity: 1

SPCLAMP

Spotlight clamp



*includes clamp

Item	Weight	Code
Clamp	52g	SPLSLV

AYA-6003BLKEU/UK/USA

Armlight LED Black EU/UK/USA (c/w AYA6001)



Double sided Connection
*includes Mount & Plug
(Extension sold separately)

Weight: EU (551g) / UK (558g) / US (547g)

*Weight includes all x3 Components - Spotlight, Clamp & Plug

Pack quantity: 1

AYA - 6002 EU / UK / USA

Armlight LED Chrome EU/UK/USA (c/w AYA6001)



Double sided Connection
*includes Mount & Plug
(Extension sold separately)

Weight: EU (551g) / UK (558g) / US (547g)

*Weight includes all x3 Components - Spotlight, Clamp & Plug

Pack quantity: 1

TRL - EU / UK / US

LED Spotlight Transformer only*



Weight: EU (189g) / UK (194g) / US (180g)

Pack quantity: 1

TRL-EXT EU / UK / US

Spotlight Extension Male/ Female



Length(mm): 1500mm

Weight: 73g

Pack Quantity: 1

LS24V056-5L / 9L

LED light strips 24 volt (5/9 LED)



Size(mm): 361Lx21W(5 strip), 467Lx24W(9 strip)
Excluding Wire*

Weight: 62g(5 strip), 84g(9 strip)

Pack Quantity: 1

LBL460

Extension Litebox lead - 460mm



Weight: 70.4g

Pack Quantity: 1

Size: 460mm

LD24V100 / 200

Transformer 100 / 200watt (24 volt)



Internal size: 290wx250dx960h - mm

Weight: 354g (100w) - 877g (200w)

Capacity: 56 tubes - 951 mm c/c

Pack Quantity: 1

LBSMC

M-Clip



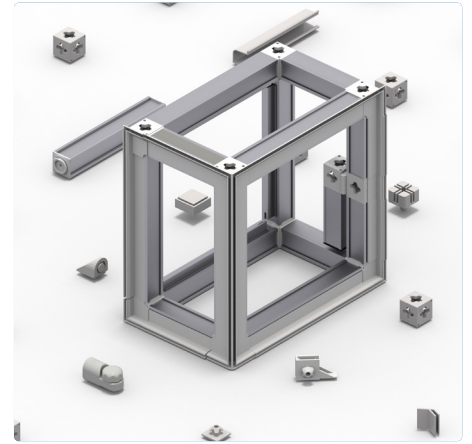
Weight: 4g

Pack Quantity: 20

T3 Kits

GET A BETTER UNDERSTANDING OF THE T3 SYSTEMS SOLUTIONS

If you want to know more about T3 Systems, why not order one of our T3 Kits. It will allow you to get a hands on feel for the modular framework system that is changing the industry. The kit's provide a simple yet comprehensive understanding of how our patented T3 System products work as well as introducing some of the main components.



TSK

T3 FRAME SAMPLE KIT



Weight: 1249g
Pack quantity: 1
(frame only weight)*
Includes: USB / Brochures

TDK

T3 FRAME DEMO KIT



Weight: 4750g
Pack quantity: 1
(frame only weight)*
Includes: Extra T3Frame Accessories / USB/
Brochures

AYDK

T3 AFFINITY DEMO KIT



In stock Fall 2018**

Weight: 5654g
Pack quantity: 1
Available late 2018**

WLSK

T3 WANDLITE SAMPLE KIT



Packed Weight: 465g
Pack quantity: 1

For more news & Information
about all our products visit:



WWW.T3SYSTEMS.COM

Versatile & Innovative





GET IN TOUCH



sales@t3systems.com



UK OFFICE: +44 (0)208 803 4469

EU OFFICE: + 33 352 3653 44



WWW.T3SYSTEMS.COM

